

TIMELINE & ACTIVITIES

Definition Phase (2019-2021)

The 18 month definition phase initially serves to consolidate the partnership structures with our local research, implementation and dissemination partners.

At the research level, key milestones are the joint identification of relevant indicators and methods intended to serve a trans-disciplinary, mutual understanding of the notion of urban quality of life. Our research results are summarized in the basic reports of each work package and are the foundation for evidence-based decision-making for our implementation partners. A feasibility study for an eco-city model pilot project will serve as a trans-disciplinary example of our research.

The trans-disciplinarily developed Build4People products, such as the 1st edition of the touring exhibition "Green Buildings and Sustainable Urban Neighbourhoods" or the results of our surveys on urban quality of life, will be presented at several dissemination events. Intensive public relations campaigns, mainly via social media, will be launched in parallel to all activities.

Research & Development Phase (2021-2025)

At the start of the four-year R&D phase we will research in-depth information on the local conditions to create a valid basis for evidence-based decision-making at all levels. The information reference tools and resources that we produce will be destined for use by the municipal and relevant national authorities, the local industry and the general public. The tools and resources include handbooks for green housing, an innovative index of urban quality of life, several demonstration projects as well as capacity building measures at universities and among practitioners.

Several feasibility studies will also be conducted during this phase to prepare the companies and donor organisations for their inclusion into the subsequent implementation phase.

Implementation Phase (2025-2027)

The final two-year phase aims to encourage the implementation by involving partners such as GIZ, KfW, UNDP or other donor organisations, and to extend the results of our project to other cities in Cambodia.

BUILD4PEOPLE CONSORTIUM

We have gathered a multi-disciplinary team with a proven record of academic excellence, extensive regional expertise and solid project experience.

Local Project Management Partner

Cambodian Institute of Urban Studies
General Director: Tep Makathy
Project Coordinator: Mach Tola



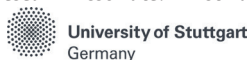
Work Package 1: Behaviour Change

Leaders: Dr. Anke Blöbaum / Prof. Dr. Ellen Matthies
Research Associate: Annalena Becker



Work Package 2: Sustainable Building

Leader: Dr. Dirk Schwede
Research Associate: Christina Karagianni



Work Package 3: Sustainable Neighbourhoods

Leader: Rolf Messerschmidt
Research Associates: Marcelo R. Leyton & Oliver Lambrecht

EBLE MESSERSCHMIDT PARTNER
Architekten und Stadtplaner PartGmbH

Work Package 4: Urban Green

Leader: Prof. Dr. Jan-Peter Mund
Research Associate: Amelie McKenna



Work Package 5: Urban Climate

Leaders: Prof. Dr. Lutz Katzschner / Sebastian Kupski



Work Package 6: Sustainable Urban Transformation

Leader: Dr. Michael Waibel
Research Associate: Ravi Jayaweera



BUILD4PEOPLE COORDINATION

University of Hamburg / Department of Earth Sciences
Institute of Geography / Division of Human Geography
Consortium Leader & Coordination: Dr Michael Waibel
Bundesstraße 55, 20146 Hamburg, Germany
Email: michael@build4people.org

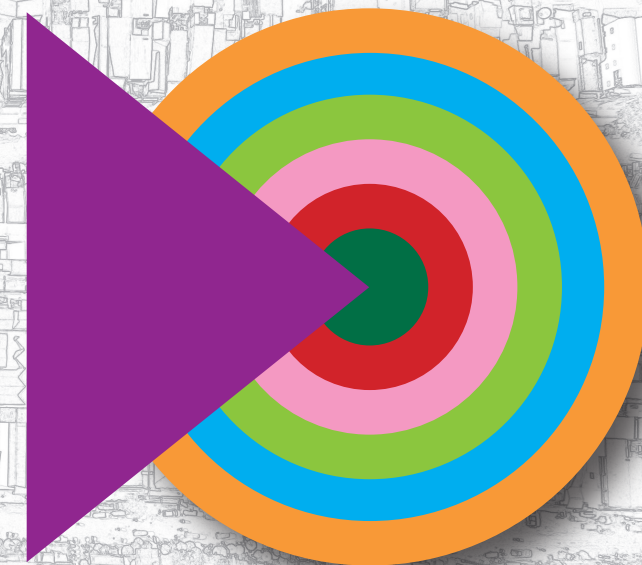
Local Project Coordination Support: Dr Susanne Bodach
Email: susanne@build4people.org / Tel.: +855-128.56.174

Build4People
@Social Media



Build4People Project

Sustainable Buildings for People – Enhancing Urban Quality of Life in Cambodia



www.build4people.org

„The battle for a more sustainable future
will be won or lost in cities“

2012 Manifesto for Cities, Global Mayors' Forum

Text, design & picture credits: © Michael Waibel, Language Editing: Monique Gross, Last update: 02/2020.

PROJECT LEADER



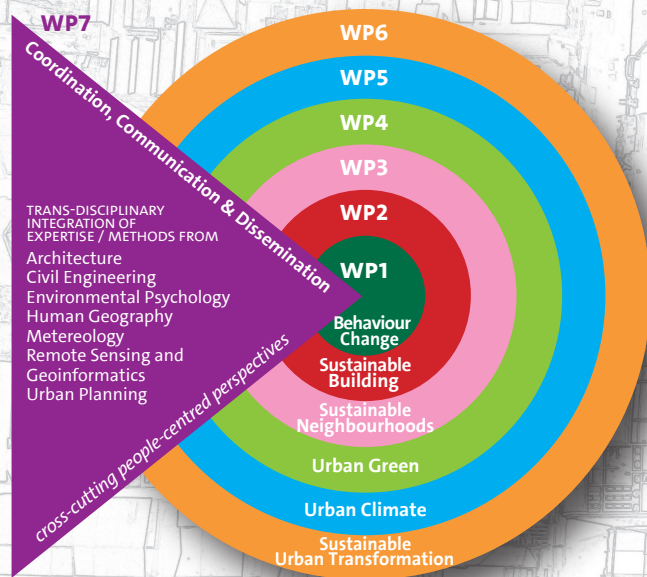
SPONSORED BY THE



INSPIRED BY



BUILD4PEOPLE WORK PACKAGES



OVERVIEW: PRINCIPLES & AIMS OF THE BUILD4PEOPLE PROJECT

GENERAL RESEARCH GUIDING PRINCIPLES

action research

balanced mix of bottom-up & top-down

dissemination & impact management

locally adapted solutions

inclusive

multi-stakeholder coalitions

demand-driven

convincing people

advocacy

EXPECTED FINAL RESULTS / SELECT IMPACTS

eco-city transition lab

green school

DGNB certification

sustainable buildings

capacity building

adapted policies and standards

pro-environmental behaviour

mass effects through replication

quality of urban life city index

RESEARCH PARTNERS



IMPLEMENTATION PARTNERS



DISSEMINATION PARTNERS



RATIONALE & BACKGROUND

Dynamic economic growth and a *building boom* are currently reshaping urban space in Cambodia. These processes are heavily dominated by short-term profit interests that *marginalize sustainability dimensions*.

Despite high local electricity prices and a long tradition of climate-mitigating *vernacular architecture* and *urban patterns*, most of the recent buildings are neither energy-efficient nor adapted to the tropical climate.

At the same time, the development towards a *modern consumer society* in Cambodia is leading to *more resource-intensive lifestyles*. This significantly affects the way buildings are designed, built and operated. Issues of sustainability have still not been sufficiently addressed by local decision-makers and stakeholders in the construction industry, the relevant ministries, the educational institutions and building users.

ORIGINALITY

Sustainability is a *transversal* issue. To achieve a viable implementation, with a sustained impact, we pursue a *trans-disciplinary* and *holistic approach* incorporating innovative methods and expertise from various fields (see above).

The work package teams will cooperate together, share their findings and develop *joint deliverables*. Tools and products will systematically build upon each other. *Learning curves* and *feedback loops* will be incorporated into the project design.

The promotion of sustainable buildings cannot only happen in the top-down manner of simply issuing regulations. To *kick-start change* and *advocate implementation* we will therefore follow an inclusive method of *engagement*, *encouragement*, *enablement* and *exemplification*. Our approach is to *convince people* rather than to force them.

OVERALL OBJECTIVES

Our project promotes *sustainable buildings* and *sustainable urban development* in Cambodia from a *people-centred perspective* whose connecting scientific-conceptual, analytical and superior normative bracket is always the *urban quality of life*.

With this project, our multi-disciplinary team focuses on aligning *people's needs and aspirations* with tools to benefit and enhance their living. We believe this will lead to major effects on urban sustainability through more *energy- and resource-efficient buildings*. The results we seek are no less than significantly lowered pollutant emissions, an increase of urban green, a healthier urban climate, raised awareness among decision makers, modified behaviour among the citizens and an overall better *quality of urban life*.

Our Advisory Board will ensure that our measures are *demand-driven* and *adapted to the local context*.